



TRIMBLE GeoManager

Trimble® GeoManagerSM provides an on-demand, Fleet Productivity & Management (FPM) solution that integrates GPS, wireless and your standard web browser into a mobile solution that helps you manage your drivers and field technicians. GeoManager offers an end-to-end Mobile Resource Management (MRM) solution with an array of features and options that help you get the information you need, when you need it, to make intelligent business decisions.

Whether you want to instantly locate the vehicles in your fleet, find the nearest vehicle to a job, dispatch text messages to drivers or field technicians, or view and print detailed reports, GeoManager helps you manage overall mobile workforce performance, decrease overtime, reduce fuel and operational costs and maximize customers' satisfaction. And because it is a web-based solution, you can manage your drivers and field technicians from any location where you have Internet access.



Key Benefits

- Manage your vehicles and employees in real time
- Decrease fuel costs by reducing unauthorized stops, curbing excessive speeding and idling, planning better routes and tracking maintenance
- Increase the number of jobs performed or deliveries completed per day
- Reduce payroll and overtime costs with more accurate tracking of drivers' and field technicians' time
- Improve customer service with faster response times
- Develop better driver safety with real-time alerts and reports about speed, following distance and other driver behaviors
- Improve communication between dispatchers and drivers or field technicians with two-way messaging
- Lower emissions and your company's carbon footprint with trip information reports detailing fuel usage based on travel, idle and PTO times

Using the Map to Get Enhanced Vehicle Information

GeoManager enhanced mapping allows you to instantly get the information you need, when you need it, so you can make informed decisions about the daily activities of your drivers and field technicians. The GeoManager map shows vehicle locations, current status, speed and date and time information with a choice of map views, including street, satellite and aerial close-up. And if you need specific types of information about your vehicles or drivers on a regular basis, you can customize GeoManager to show the information you need, such as vehicle make or driver identification.

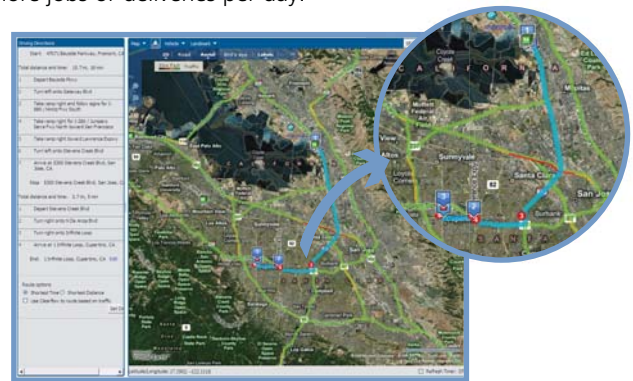


Monitoring Your Fleet with Status View

The GeoManager Status View allows you to view the overall status of your vehicles in real time, letting you see the number of vehicles you have in your fleet that are moving, stopped or inactive, how many need maintenance attention and whether any of your drivers are outside Hours of Service rules and compliance.

Receiving Driving Directions for Faster Deliveries and Better Customer Service

Dispatchers can help drivers get to customer locations more quickly by using the optional driving directions feature in the GeoManager map. By entering the start and final address, dispatchers can relay directions to drivers or field technicians before they leave for their next job, saving them valuable time and allowing them to complete more jobs or deliveries per day.



Creating Landmarks for Faster Location Identification and Improved Time Management

GeoManager allows you to create thousands of Landmarks that help you identify common locations more quickly and accurately. Landmarks may include customer locations, drivers' and field technicians' homes, work yards, motor pools and off-limits locations. Using GeoManager Exceptions reports, you can track your employees' proximity to each Landmark as the day progresses, helping you manage their time more efficiently.

Communicating with Your Drivers and Field Technicians for Improved Work Performance

GeoManager helps dispatchers and managers communicate in real time using two-way messaging and forms, allowing you to stay up-to-date on your drivers' status and work needs. Using the optional /DT 3000 or the new mDT 4000 in-vehicle display terminal, drivers can send pre-defined or free-form messages and forms to the back office for faster communication. You can also customize forms to fit your company's needs, as well as incorporate the optional bar code wand and keyboard to make filling in forms easier and more accurate for drivers and field technicians.



Offering Value-Added Features and Reports Packages to Improve Productivity and Lower Costs

GeoManager offers an array of features and reports about your workers, their work and your assets and vehicles. Along with the standard features and reports, several value-added GeoManager packages are available to help you address the specific business needs and requirements of your company. Whether you need to reduce fuel costs, increase your workers' productivity, get advanced vehicle diagnostics for your fleet or encourage driver safety, GeoManager value-added packages get you the information you need to help you efficiently manage your business.

GeoManager value-added packages include:

- **Mobile Worker Productivity** – Improve driver productivity with reports and real-time alerts about stops, trip times, mileage totals, off-hours vehicle use, inactivity and work zones.
- **Workshift Productivity** – Keep track of your employees and improve your customer service with reports and features that calculate the time logged in, time spent in the yard, trip times and mileage totals.
- **Advanced Fuel and Carbon Emission Management** – Reduce your fuel consumption and emissions with reports and features that show fuel usage, engine speed, sudden acceleration, PTO, state mileage and carbon emissions.
- **Advanced Engine Diagnostics** – Improve your vehicle maintenance, service scheduling and uptime by getting fault codes and alerts about engine difficulties before they become a major problem.
- **Advanced Safety Management** – Enhance your drivers' safety and compliance with reports and features that monitor brake use, following distances and sudden acceleration. Freeze frame reports show specific vehicle engine information for 40 seconds around an event.

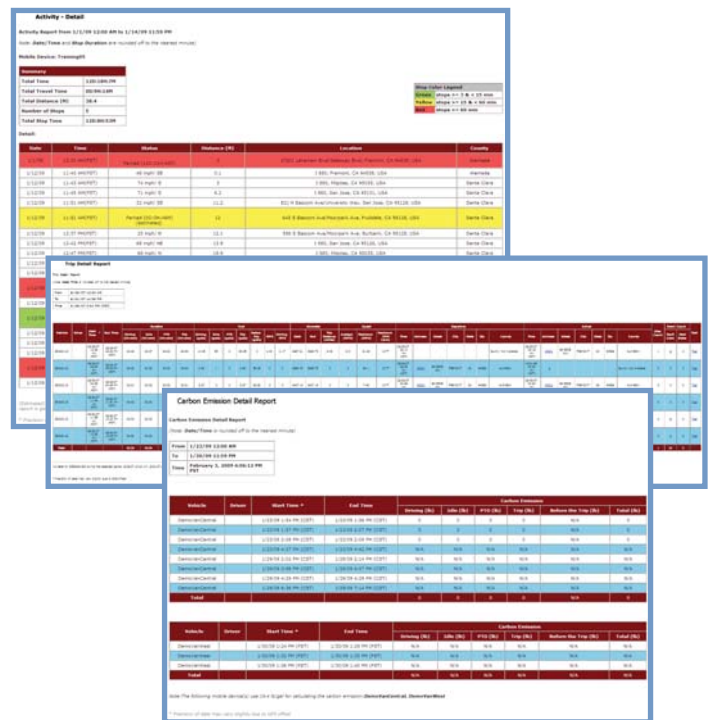
- **Sensor Connect** – Gain valuable insight into the status of your mobile assets and inventory with PTO, switch and temperature sensors.
- **Data Feeds for Integration** – Facilitate a more rapid return-on-investment by integrating GeoManager data with your current back-office applications.

GeoManager mobile applications include:

- **Time Card Reporting** – Reduce overtime and increase time management awareness with summary and detailed reports for drivers' and field technicians' work hours.
- **Messaging and Communications** – Improve customer service and driver productivity by using two-way messaging, forms and messaging reports.
- **Workflow Status** – Increase the number of jobs or deliveries done per day with real-time work status information, messaging and reports.
- **Hours of Service and Driver Log Compliance** – Increase driver safety and productivity with automated logs that help track Hours of Service and DOT regulatory compliance.

Preserving the Environment for Future Generations

Due to the increased awareness of environmental issues, many companies have implemented green initiatives to help protect the earth's ecology. With its optional Fuel Carbon Emissions reports and fuel saving features, GeoManager helps your company do its part to reduce carbon emissions and protect the environment while increasing your profits.



GeoManager Features

Advanced MRM

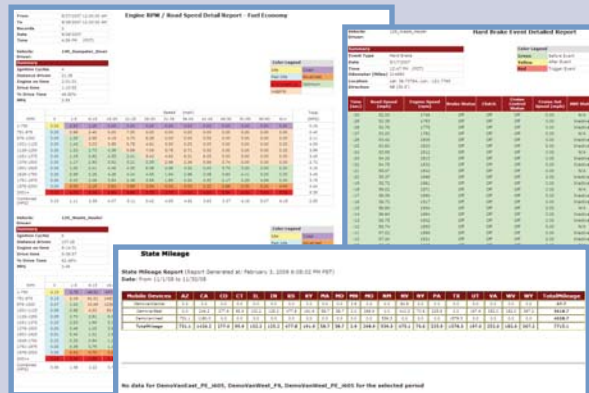
- View the real-time status and locations of your vehicles or field technicians anywhere in the world
- View vehicles and field technicians using satellite photos with street, satellite and aerial close-up views
- Get a quick fleet overview using the Status View
- Receive instant alerts on excessive speed, vehicle idle time and proximity to a Landmark—such as a customer location or work yard—as well as an array of other alerts
- Track start and stop times as well as mileage totals
- Relay optional turn-by-turn directions to drivers and field technicians
- Get updated traffic information
- Review routes traveled by drivers and field technicians
- Customize maps and designate Landmarks
- Upload multiple Landmarks
- Automate service scheduling for management of vehicle maintenance

Flexible Reporting

- Generate reports on demand, or schedule for email delivery
- Select from an array of reports, including employee productivity, fuel efficiency and driver safety
- Generate reports for specific groups of your organizational hierarchy
- Review Exception reports showing drivers who exceeded set parameters for speed, idling times, etc.
- Export reports to any standard database or application
- View report data for 90 days or up to one year with extended data storage plans

Premium Administration

- Manage access to GeoManager administration with role-based access control, which allows users to see only the information they need
- Create work groups by using your company's management structure
- Administer vehicles or field technicians from any location where you have Internet access
- Select and enter items for vehicle maintenance schedules



Convenient Communication

- Send messages to all mobile resources instantly
- Receive pre-defined or free-form text messages and forms from remote workers with the optional iDT 3000 and mDT 4000 in-vehicle hardware or handheld solutions
- Enable population of forms with optional barcode scan
- Provide Wi-Fi access point capability through the iLM® 3100-W Series
- Access the Internet through a cable connection to iLM 3100-W Series and iLM 4500 Series hardware options
- Receive high-speed wireless data communication on 3G networks for multiple carriers

Extensive Support

- Benefit from real-time, proactive system monitoring and support
- Enjoy 24x7 online or live technical support
- Access nationwide phone support
- Request service engineer or integration support
- Choose professional or self-installation

© 2009, Trimble Navigation Limited. All rights reserved. Trimble and the Globe & Triangle logo are trademarks of Trimble Navigation Limited registered in the United States Patent and Trademark Office and other countries. TrimView and TrimView are trademarks of Trimble Navigation Limited. GeoManager is a service mark of Trimble Navigation Limited. All other trademarks are the property of their respective owners.

BR-GM9-6Apr09US

Trimble MRM (East)
3650 Concorde Parkway
Suite 150
Chantilly, VA 20151
Tel : 1-877-883-4367
www.trimble.com/mrm

Trimble MRM (West)
47071 Bayside Parkway
Fremont, CA 94538
Tel: 1-877-728-7623
www.trimble.com/mrm

Trimble MRM, Ltd. (EMEA)
North Felaw Maltings
48 Felaw Street
Ipswich IP2 8PN, United Kingdom
Tel: 44 (0) 1473-696-300
www.trimble.com/mrm

Trimble MRM (APAC)
Trimble Navigation Ltd.
A102, 244 Beecroft Road
Epping NSW 2121, Australia
Tel : 61 (2) 98127900
www.trimble.com/mrm

Trimble MRM (China)
311 Fute (M) Road
Wai Gaoqiao Free Trade Zone
Pudong, Shanghai 200131
86-21-5046-4200
www.trimble.com.cn